

# 2025 ANNUAL REPORT



*Ngā maunga Kahurangi  
Ki ngā tai o Aorere  
Piki mai ki tō wawata  
Hoki mai e hoa mā*

*Whenua Iti  
Manawa nui  
Kaua e wareware  
He aroha mutunga kore*

- Nā Lucy Carver i tito

## CONTENTS

- 3 ..... Introduction
- 4 ..... Chair's Statement - Pip Lynch
- 5 ..... CE's Statement - Mark Bruce-Miller
- 6 ..... Visual Outcomes Model
- 8 ..... At A Glance
- 10 ..... Social
- 12 ..... Cultural
- 14 ..... Environmental
- 16 ..... Financial
- 18 ..... Thank You
- 19 ..... Climbing Centre Opens

## NGĀ MIHI MAIOHA

Ko Tū-Ao-Wharepapa te maunga rangatira  
Ko Pukeone te puke whakaruruhau  
Ko Motueka te awa whakahirahira  
Ko Riuwaka te puna waiora  
Ko Te Tai Aorere te moana  
Ko Ngāti Rārua rāua ko Te Ātiawa ngā iwi mana whenua  
Ko Te Āwhina te marae  
Ko Moutere te whenua  
Ko Whenua Iti te wānanga  
Ko Hazel Nash te kaiwhakaū  
Tēnā koutou, tēnā koutou, tēnā koutou katoa

## WHAKAMANA

We inspire, we encourage, we instil confidence

## KAITIAKITANGA

We model guardianship, stewardship and trusteeship of our land and our people

## MANAAKITANGA

We show respect, generosity and care for others

## WHANAUNGATANGA

We share experiences and together we strengthen each other and our communities

## OUR VISION:

Experiential Learning Inspiring Positive Change

## OUR MISSION:

To Achieve Positive Change in Individuals & Communities

## INTRODUCING WHENUA ITI TRUST INCORPORATED

Whenua Iti Trust Inc (WIT) was established in 1986 and trades as Whenua Iti Outdoors (WIO). WIO delivers programmes that incorporate adventurous, environmental, wellbeing, cultural and community elements. Through personal challenge and development we create opportunities for long-term, positive change in participants' everyday lives. Our focus on educational, hauora (holistic health), employability and community outcomes builds strong people, whānau and communities. We work predominantly across Te Taihū (Top of the South Island) and Te Tai Poutini (West Coast). WIO was founded by the phenomenal Hazel Nash.

2025 WIT Board Members: Pip Lynch (Chair), Amy Dalton, Eli Grace-Webb, Cheryl Heta, Matt Boggs, David Ross, Phil Sharpin, Arthur Graves and Tanya McMurtrie. Secretary: Alena Visser.

## OUR REPORTING APPROACH

Our reporting approach reflects the breadth, holistic nature, and depth of our impact. This Quadruple Bottom Line report covers four key areas: Social, Cultural, Environmental and Financial.

## FROM THE WHENUA ITI TRUST BOARD

I am pleased to report that Whenua Iti Trust Incorporated has navigated through another challenging year. Uncertainty has become normal in many aspects of life now, and as a Board, we are moving to planning for disruption rather than being surprised by it. Whenua Iti Outdoors keeps proving, year after year, that there is a way through, when enough initiative and determination is applied.

One of the strengths that Whenua Iti Outdoors has built up over the years is a deep connection to the community and to the agencies concerned with community needs. Whenua Iti is very well regarded among not only the for-purpose sector regionally but local businesses, local government, and national government agencies. They know our work and respect the quality of our people and processes. As an example, in July 2025, when Te Taihū was again visited by a very damaging storm, Whenua Iti was a 'go to' organisation for managing clean-up crews. That was not our usual work but utilised our people management, safety systems and kaupapa of drawing the best from whoever we interact with. Those crews made a positive difference on the properties they worked on, became part of our whānau and greatly valued their time with us.

This report shows our impact locally and further afield. Over 80% of our programming is to Te Taihū. Our work in Te Tai Poutini has increased and we have a few groups attending from Te Ika-a-Maui. ExpedNZ supports our domestic programming financially and will continue to do so. Our educational, social, cultural and environmental outcomes remain very positive. We continue to invest in quality educational programming and recently opened our all-weather climbing centre that doubles as a sheltered sleeping space onsite.

Financially, Whenua Iti Trust is stable. At the beginning of 2025, WIO reported a negative liquidity position, however at the time of writing we are expecting an end-of-year small surplus. We continue to work with Whenua Iti Foundation to create smooth pathways for donors to contribute to pooled investments and/or operational projects.

Thanks to our supporters, sponsors, service providers, schools, families and staff. We cannot create positive impact without you.



Pip Lynch, Whenua Iti Trust Board Chair





## FROM THE CHIEF EXECUTIVE

A key to Whenua Iti Outdoors' success over recent times has been our ability to remain nimble and proactively step into opportunity as it arises. This is something that we can be proud of as a team, and it was certainly something that 2025 necessitated.

In light of a severely reduced funding environment and ever-increasing cost structures, the organisation faced some difficult times through 2025. This resulted in us being forced, mid-year, into a position of having to resize the organisation to fit the current environment. Sadly, through this process, we had to say goodbye to a number of valued colleagues. This is not something we would like to repeat and, in hindsight, the timing was particularly unfortunate.

Within only a few weeks of completing this process, demand for our services increased significantly following the severe storm events that impacted the region in late June. True to our nimble spirit, we were able to rapidly establish two new community response teams under the banner of Taskforce Green. For nearly six months, these teams worked across the region supporting landowners, farmers and communities in flood recovery efforts. The work was physically demanding, but deeply valued by the community, and it was inspiring to see the commitment and dedication shown by our staff day in and day out during this period.

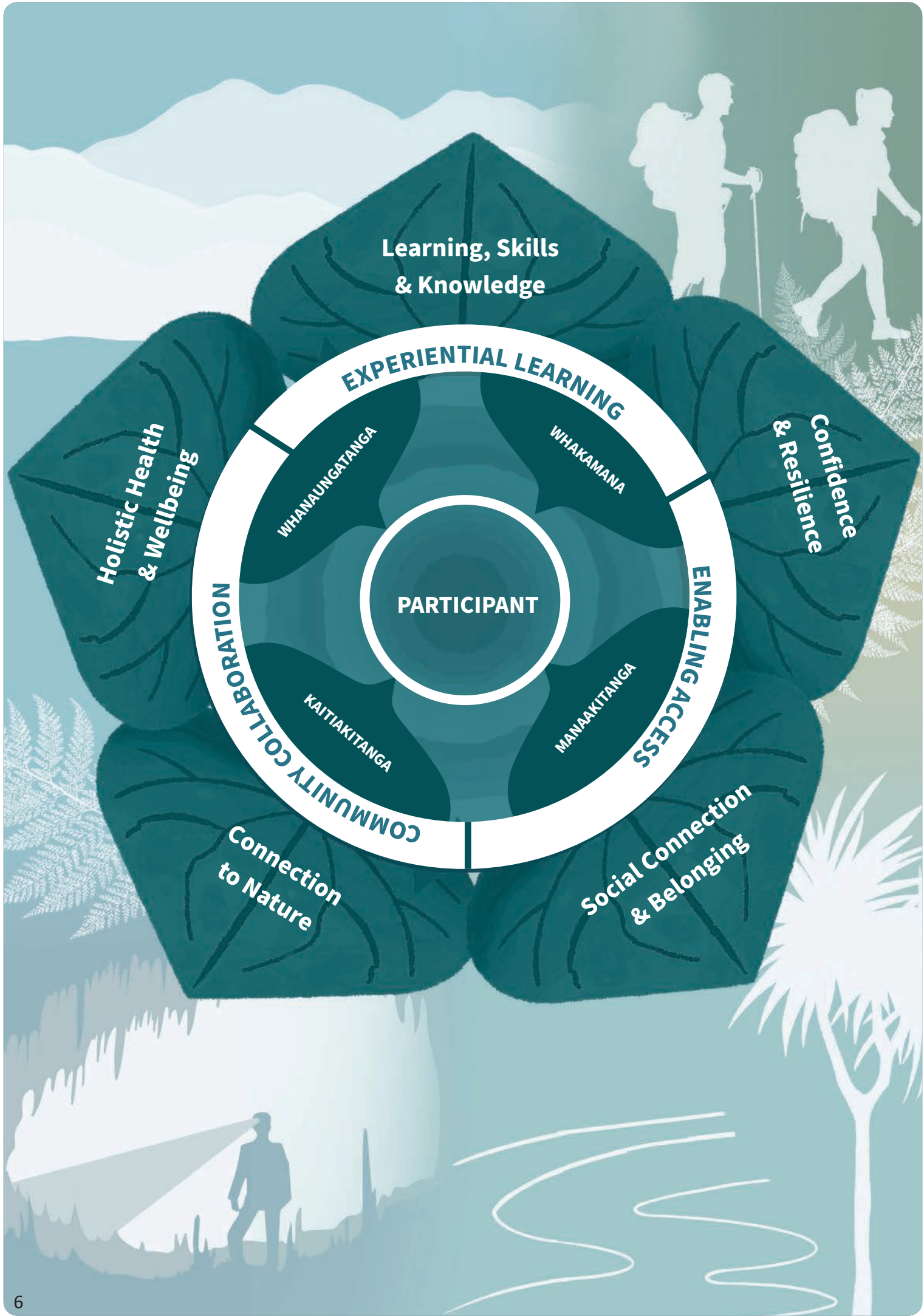
Alongside this work, our usual suite of programmes continued successfully throughout the year. We also made significant progress in our engagement with international schools from the United States. This growth has provided important breadth and depth to our income streams at a time when the New Zealand economy remains under significant pressure, businesses across the country are facing challenges, and available government funding is at its lowest level in at least the last fifteen years.

The year ultimately finished positively from a financial perspective. We were able to return to a significant surplus for the year and step strongly into 2026 with renewed momentum and opportunity ahead. My thanks go to all members of the Whenua Iti Trust whose valued volunteer contribution was called upon significantly during the year as we collectively navigated a number of challenges. We are fortunate to have an amazingly talented and dedicated team. Without their commitment, adaptability and willingness to step into whatever was required, we would struggle to remain in the proactive and nimble space that defines our organisation.

Finally, my sincere thanks go to the entire team. It is a privilege to walk this journey alongside you all.



Mark Bruce-Miller, Chief Executive



# WIO IMPACT MODEL

The page opposite shows a visual representation of the intended outcomes for every participant who attends our programmes. It represents the holistic and integrated nature of the outcomes that participants experience. It is unlikely, for example, that confidence and resilience happen in isolation from a sense of belonging. Each programme has benefits unique to each individual, and a strength of our programme design is that it allows for a student-centred approach — each participant is at the heart of what we do. We work towards individual growth that will ultimately benefit the whānau, community or school our participants return to after our programmes. This growth is likened to the growth rings of a tree, which builds strength, developing ‘leaves’ of positive outcomes as each individual flourishes under our guidance.

## PROGRAMME OUTCOMES



### CONFIDENCE & RESILIENCE

Participants have the chance to overcome a range of challenges, be they mental, physical or emotional, in a safe and supportive environment, building resilience & confidence, proving to themselves that they are capable of adapting to change.



### SOCIAL CONNECTION & BELONGING

Shared experiences in the outdoors form strong bonds and lasting friendships, without distractions from daily life. Activities chosen for programmes encourage teamwork, leadership and community connection to develop a sense of purpose & belonging.



### LEARNING, SKILLS & KNOWLEDGE

Experiential learning in the outdoors improves learner confidence, skills and knowledge. We are NZQA accredited to support classroom learning and can offer NCEA assessments for transferable & practical skills needed for employment and participants’ futures.



### CONNECTION TO NATURE

Immersed in wilderness settings, participants learn both Western & Te Ao Māori perspectives of te taiao (nature). This opens up new ways of thinking, deepens understanding & connection to this land and promotes wellbeing & kaitiakitanga (guardianship).



### HOLISTIC HEALTH & WELLBEING

Being active in the outdoors, away from devices in a supportive & safe setting that enables social connection is the ultimate boost for participants’ wellbeing. They will leave feeling more confident, capable and able to accept life’s challenges.

## OUR MAHI

We provide experiential learning programmes in the outdoors as the platform for positive change. We enable access to our programmes by removing barriers that exist to participation — whether these are social, financial or cultural.

We facilitate community collaboration alongside partner organisations to identify community need, and respond to that need with programmes that successfully achieve the intended outcomes.

## OUR KAUPAPA

Our values are incorporated into each of our programmes to provide a safe and supportive environment for personal growth, where we instil confidence, nurture positive relationships and provide the opportunity to connect with and care for our environment.

# AT A GLANCE

## PARTICIPANT REACH

**13,103**

TOTAL PARTICIPANT DAYS

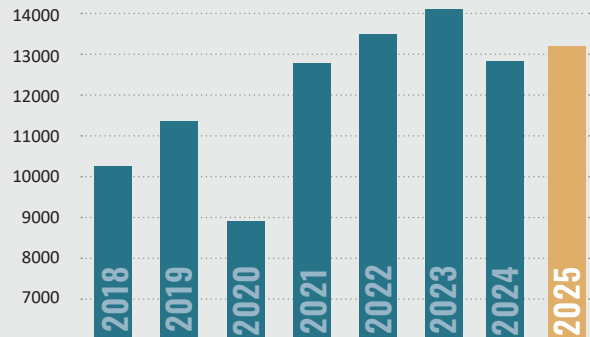
**4,777**

TOTAL PARTICIPANTS

**611**

PARTICIPANT NIGHTS IN NATIONAL PARKS

## TOTAL PARTICIPANT DAYS



## WIO PROGRAMME ELEMENTS

ADVENTURE

COMMUNITY

CULTURAL

ENVIRONMENT



WELLBEING

**31**

STAFF

**16**

INSTRUCTORS

**24.1**

FTE

## PARTICIPANT ORIGIN

Te Ika-a-Māui *North Island* 1.9%

USA/Canada 5.1%

India 0.36%

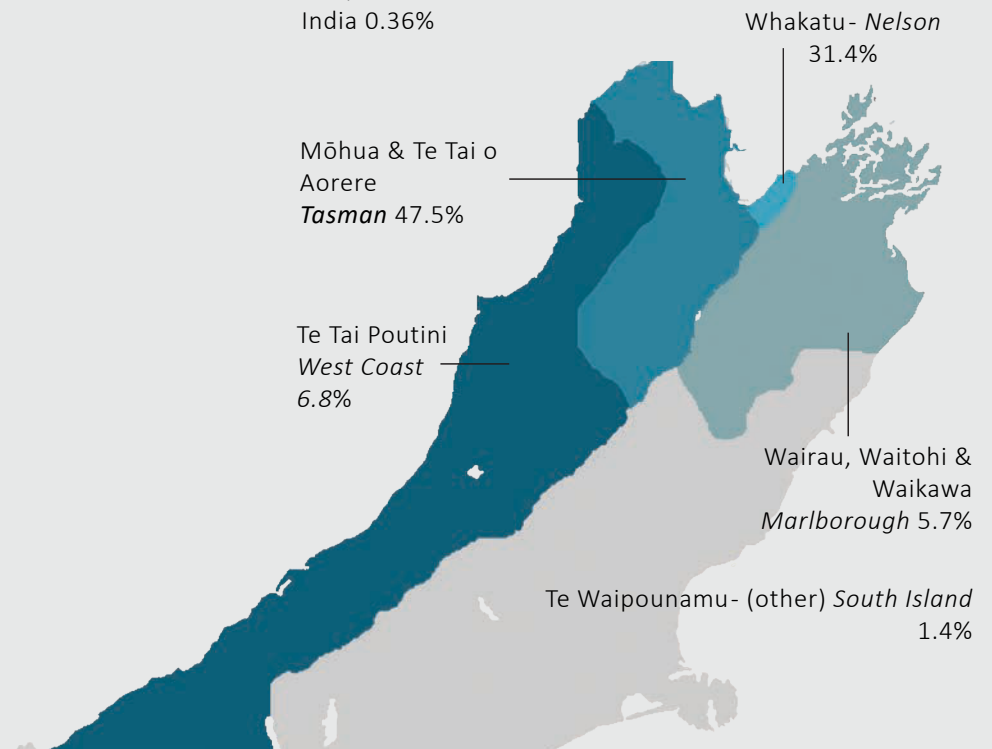
Mōhua & Te Tai o Aorere  
*Tasman* 47.5%

Te Tai Poutini  
*West Coast* 6.8%

Whakatu- Nelson  
31.4%

Wairau, Waitohi & Waikawa  
*Marlborough* 5.7%

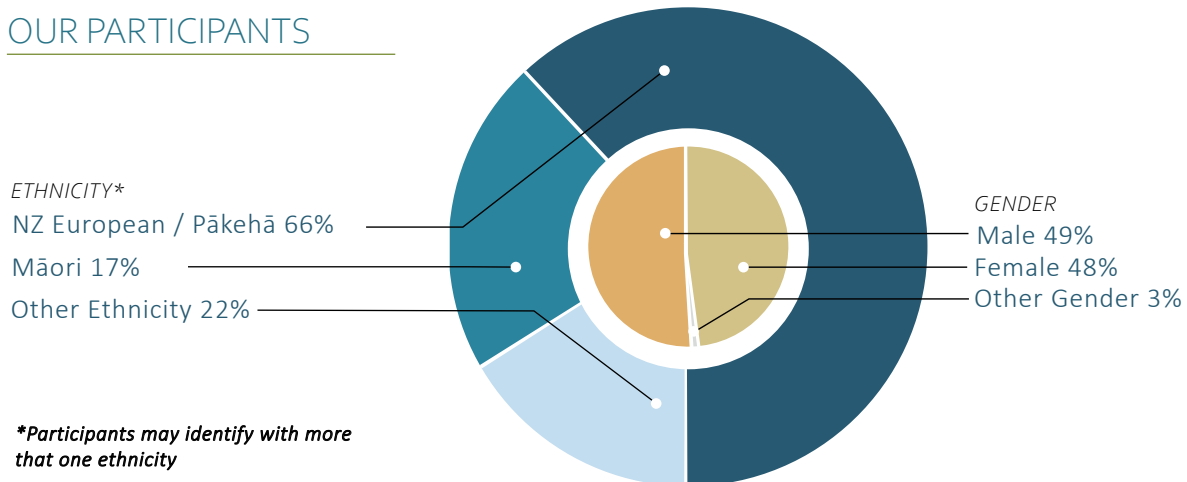
Te Waipounamu- (other) *South Island* 1.4%



“Strong values-based governance and leadership underpins successful delivery of experiential learning activities.... Students are well supported in a safe and inclusive environment. Safety is a key aspect of the student experience, and this is well managed. Social connection and personal development are key outcomes of the training. Tutors have a positive, youth-focused approach that supports students to meet challenges and succeed.”

- Most Recent External Evaluation & Review, NZQA, 2023

## OUR PARTICIPANTS



## PROGRAMME TYPE

**208** MULTI-DAY PROGRAMMES

**96** SINGLE-DAY PROGRAMMES

**5** MENTORING PROGRAMMES

## KAUPAPA MĀORI

**10** KAUPAPA MĀORI PROGRAMMES

**173** PARTICIPANTS ON OUR KAUPAPA MĀORI PROGRAMMES

**64** MANAAKI TĀPOI PARTICIPANTS

## AUDITS & ACCREDITATIONS

CATEGORY 1 PTE  
**HIGHLY CONFIDENT** IN EDUCATION PERFORMANCE  
**CONFIDENT** IN CAPABILITY IN SELF-ASSESSMENT

QUALMARK **GOLD** ACCREDITED

## SAFETY

**10** STAFF COMPLETED PHEC AND OUTDOOR FIRST AID QUALIFICATIONS

**99%** OF PARTICIPANTS FELT SAFE THROUGHOUT THE PROGRAMME

**1.4** INCIDENTS PER 1,000 PARTICIPANT DAYS - LOWEST RATE IN 10 YEARS

# SOCIAL

Active, experiential learning in the outdoors has a proven positive impact on the physical, mental, and emotional wellbeing of young people. We see this daily through participant growth and programme outcomes. Our programmes create space for young people to disconnect from the digital world, deepen their connection to te taiao, and build meaningful relationships with others.

We design our work to deliver positive social impact, aligning with local, national, and international approaches that support the wellbeing of individuals, whānau, and communities. Strong partnerships help remove barriers to participation, broaden access, and strengthen pathways for future opportunities.

Key outcomes include:

**Educational achievement:** NCEA-assessed programmes in experiential settings support student success and confidence.

**Employability and life skills:** Participants gain essential, transferable skills that enhance their prospects in employment, training, and life.

**Community contribution:** Service and leadership opportunities build capability, responsibility, and a strong sense of belonging, supporting young people to actively contribute to their communities.

## 2025 OUTCOMES & HIGHLIGHTS

- Following significant regional flooding, Whenua Iti delivered the Ministry of Social Development (MSD) Taskforce Green Project, employing 18 job-seekers across two crews to support recovery and clean-up efforts.
- Whenua Iti Outdoors was honoured to receive the NBS Community Impact Award at the Nelson Tasman Chamber of Commerce Business Awards, recognising our contribution to community wellbeing.
- Parklands School returned for a second year to take part in a social development programme, supporting students' social, emotional, and motor skills through hands-on, values-driven outdoor learning, with noticeably improved engagement at school.
- The Ignite Programme celebrated its 7th year, in partnership with Motueka High School and a local donor, fostering leadership and resilience in young men across their first three years of high school during a critical stage of development.
- We partnered with IHC to deliver a series of summer camps for participants, whānau, and siblings of people living with an intellectual disability, supporting inclusion, connection, and shared experiences.
- 11 Youth Leaders joined our inaugural Youth Leadership Council, representing six local high schools and strengthening youth voice to help inform our programmes and response to the challenges young people face.
- We launched the Youth Outdoor Film Festival, receiving over 40 entries and hosting two sold-out cinema screenings led by our Youth Leaders, celebrating young people's connection to the natural environment.

*"To give back is sort of everything, that's our part to play right? And, to help the wider community. It's just full of joy. They appreciate the help a lot."*

- ETFG Participant

# 97%

## NZQA CREDIT PASS RATE

This is the percentage of standards attempted & achieved by students who completed their programme

# 90%

## OF ALL PARTICIPANTS

agreed their programme had a positive impact on their attitude

# 3033

## NCEA CREDITS AWARDED

in partnership with Top of the South and West Coast Trades Academies

# 99%

## OF TRADES PARTICIPANTS

agreed their programme helped develop their teamwork skills

*“The biggest takeaway my son has taken from the camp is new friendships, of course, but probably more importantly, acceptance of himself.”*

- Vanessa, parent, Youth Amputee Camp

## CASE STUDY: STUMP & LIMP DIFFERENCE CAMP

The Youth Amputee Camp ran for the second time to provide a special opportunity for 16 youth amputees aged 8-16 years and their families to connect with one another across a weekend of fun, confidence-building activities and team building. The camp is designed to provide a space where participants could step outside their comfort zones, try new activities and, most importantly, meet others who share similar lived experiences. This camp is a great demonstration of the power of inclusive active recreation. It's not just about the activities, but about giving young people the space to feel comfortable, capable and supported as they challenge themselves and have fun.



## LOOKING FORWARD

We continue to advocate for access to experiential outdoor education opportunities to benefit the holistic wellbeing of those who attend our programmes. While we will continue to promote opportunities for youth in school, we will look to grow access to our programmes for disengaged or NEET youth, community groups, corporate training and transition education. There is a growing need for the development of employability skills across our community, schools and industry, skills that are difficult to foster in a classroom or office, and to understand how important it is to develop uniquely human skills, sense of belonging and connection to nature in the face of rapid technological advancement.

# CULTURAL

Working alongside our iwi partners, we continue to whakamana iwi aspirations, strengthen cultural capability across our team, and improve outcomes for all participants as we work towards a genuinely bicultural organisation.

We recognise that cultural identity and a strong sense of belonging are essential to wellbeing. Whenua Iti actively partners in the spirit of Te Tiriti o Waitangi to create an environment where Māori, and all ākonga, can thrive. Our kaupapa Māori programmes consistently deliver positive outcomes for tamariki, rangatahi, and pakeke Māori, while also supporting participants from all backgrounds to connect with te taiao and one another in mana-enhancing ways. Programmes such as Manaaki Tāpoi and Waka Journeys are designed and led by Māori kaiako, building skills, confidence, and pathways aligned with participants' aspirations. Elements of tikanga are woven throughout all programmes, encouraging deeper engagement with Te Ao Māori. We continue to invest in te reo and tikanga development for staff and Board, strengthening organisational capability and ensuring our programmes remain inclusive, relevant, and responsive to diverse cultures and identities.

## 2025 OUTCOMES & HIGHLIGHTS

- Over 60 participants, including our team, attended a four-day wānanga we co-hosted with Sport New Zealand | Ihi Aotearoa, strengthening bicultural practice and connection to te taiao across the active recreation sector. Workshops led by mana whenua, Māori organisations, and Pā Rōpata were a highlight.
- In partnership with Te Whānau o Waipareira Trust, we delivered a 9-day programme for tamariki and their kaiawhina focused on wellbeing, resilience, and belonging. 91% reported improved social confidence and stronger connection to cultural identity.
- Manaaki Tāpoi tauira performed haka, waiata, and mau rākau for close to 100 manuhiri arriving at Rakuroa Anchorage, showcasing cultural leadership in action.
- Kaitohu Taylor Bruning facilitated a workshop at the NZOIA Symposium, supporting cultural capability development for assessors across Aotearoa.
- We delivered our first Te Ao Māori workshops for partners of the Nelson Regional Development Agency, enhancing cultural competence among tourism operators.
- Sport NZ | Ihi Aotearoa supported the Ngā Ara ki te Taiao project, creating pathways for rangatahi Māori into the active recreation sector.
- We hosted a faculty programme for 17 USA-based educators, supporting curriculum enrichment through indigenous perspectives.

*“Manaaki Tāpoi has helped me be stronger in my identity as Māori rangatahi, it has connected me to my culture more.”*

- Manaaki Tāpoi Participant

# 96%

NZQA CREDIT  
PASS RATE  
FOR MĀORI  
STUDENTS

This is the percentage of standards attempted & achieved by students who completed their programme

# 266 PARTICIPANTS

took part on  
waka experiences

# 100% OF MANAAKI TĀPOI TAUIRA

felt more confident  
as a result of the  
programme

# 100% OF MANAAKI TĀPOI TAUIRA

felt the programme improved their  
desire to learn

A group of people are seen from behind, sitting in a boat on the water. The sun is setting on the horizon, creating a warm orange and yellow glow across the sky and reflecting on the water. The people are wearing dark clothing, and the boat has some light-colored markings on its side.

## CASE STUDY: BCITO RANGATIRA DEVELOPMENT PROGRAMME

Our team co-developed a custom programme with BCITO called ‘Mana Whakatipu, Mana Tangata’ designed to uplift Māori apprentices in their connection to self and their rangatiratanga. This Kaupapa Māori programme provided an experience that blended outdoor learning with Kaupapa Māori delivery, tikanga, and mātauranga Māori, centred around a transformative waka journey.

*“Programmes like this are vital, they help apprentices build confidence in themselves, both in and beyond the workplace, and strengthen the foundation for their future in the trades.”*

- Greg Durkin, Director, BCITO

## LOOKING FORWARD

We remain committed to deepening our understanding of Te Ao Māori and strengthening bicultural practice across all areas of Whenua Iti, from governance and leadership through to programme delivery and everyday interactions. Through connection to te taiao, we continue to explore how outdoor and active recreation can authentically reflect the values and aspirations of Aotearoa.

Working alongside iwi partners, we aim to whakamana iwi aspirations, strengthen cultural capability across our team, and continue building reciprocal and trusted relationships with mana whenua, rangatahi Māori, whānau, kaiako, and kaimahi. We will continue investing in te reo and tikanga Māori development for staff and Board, guided by iwi aspirations for how the stories and cultural narratives of this whenua are shared and upheld.

# ENVIRONMENTAL

When the land is well, people are well. For this reason, fostering a deeper connection to the natural world through the experiences we provide is an essential aspect of every programme. We have a vested interest in looking after the natural environment and safeguarding it for future generations. At WIO we recognise the unique opportunity we have to educate and inspire behaviours amongst our participants that can contribute to local, regional, national, and international efforts to work towards positive environmental impacts. Connection to nature is a powerful contributor to wellbeing, supporting positive health outcomes for participants and cultivating a sense of belonging.

We divide our environmental activity into three categories – what we do on our programmes, what we do on our site to support programmes, and organisation-wide activities that enable us to track and deliver on our environmental goals.

## 2025 OUTCOMES & HIGHLIGHTS

- We partnered with the Landcare Trust through funding from the BUPA Foundation to create opportunities for tamariki and rangatahi to engage with our community nursery on programmes and also through community planting events.
- Thanks to NBS we were able to run environmental programmes for local primary and secondary schools to encourage a students to take positive action for te taiao, including trap-building, pest monitoring and identification and planting.
- Across our ExpedNZ international programmes, 96% of participants agreed that the programmes inspired them to better care for the natural world.
- A rare white weka was spotted in the area where our Kaitiaki Leadership students contributed to a native planting project to encourage regeneration in biodiversity – a great early success of the project.
- Under the banner of Experiential Education New Zealand (ExpedNZ) we attended and presented at the Global Climate Summit in Toronto, Canada to elevate the importance of environmental connection and education across global education programmes in schools.
- Our onsite community nursery continues to pump out seedlings, growing native trees to support local planting and conservation projects.
- Participants on the Inspiring Leaders and Environmental Sustainability programmes got stuck into local tree planting projects. Engaging with these sites will enable our participants to revisit in future years and see the transformation of these ecosystems.

*“Not having a phone made me feel more connected to nature and I got to know people better.”*

- Kaitiaki Leadership Participant

60  
TRAPS  
CHECKED

by students on our Environmental Sustainability Programme in a single day in the Abel Tasman

---

92%

OF ALL  
PARTICIPANTS

agreed that their programme helped them connect with the natural world

---

1875

NATIVE TREES  
PLANTED

by students on our programmes

---

72%

OF SURVEYED  
PARTICIPANTS

agreed that being without their phone helped them better connect with nature



*“If we listen to the rākau, they will teach us all we need to know.”*

- Pā Rōpata (Rob McGowan),  
Rongoa Māori Practitioner

#### CASE STUDY: NGĀ ARA KI TE TAI AO WĀNANGA

Ka ora te whenua, ka ora te tangata. When the land is well, the people will be well. This whakataukī resonated throughout Ngā Ara ki te Taiao, a four-day wānanga Whenua Iiti Outdoors hosted in July to bring together people from across the active education and recreation sector to deepen their understanding of Te Ao Māori through a connection to Te Taiao. Our sector has a unique opportunity, and responsibility, to create experiences that connect participants to the world around them for the benefit of their wellbeing, and that of mother earth. The wānanga was an example of how environmental, adventurous and cultural learning, when braided together, strengthens understanding, outcomes and connection.

## LOOKING FORWARD

Nurturing our relationships with established local environmental groups and organisations is key to providing meaningful learning opportunities, connection to whenua and engagement in community through enduring conservation and restoration efforts. Our DOC-funded nature connection programme continues to live on and has been embedded across all our programmes. We will invest in further professional development for our team to refresh activities, approaches and knowledge to support environmental outcomes on our programmes and for our community. We will continue to embrace learning from Te Āo Māori, and embed the principles of Tīwaiwaka, founded by Pā Rōpata - caring for Papatūānuku, restoring mauri, and recognising the interconnectedness of all living things - across our organisation.

# FINANCIAL

Despite a highly challenging operating environment throughout 2025, Whenua Iti Outdoors remained resilient and continued to deliver significant impact across our communities. The year was marked by increasing financial pressure across the education and community sectors, changing government priorities, rising operational and compliance costs, and a growing emphasis on keeping young people engaged within traditional classroom settings rather than participating in experiential learning beyond school grounds. These shifts created genuine challenges for organisations specialising in outdoor and experiential education.

In response, Whenua Iti Outdoors adapted while remaining grounded in its kaupapa and long-term vision. The organisation strengthened its focus on programmes delivering the greatest impact and sustainability, while continuing to diversify partnerships and revenue streams. International programming through Experiential Education New Zealand grew strongly and played an increasingly important role in supporting wider community outcomes and local youth development initiatives.

A major contributor to the organisation's resilience was the delivery of the Taskforce Green flood recovery project following severe weather events across Te Taihū and surrounding regions. The project enabled Whenua Iti Outdoors to rapidly establish additional employment and operational capacity during a period of wider sector uncertainty. It also provided a valuable diversified revenue stream that helped maintain employment, organisational capability, and regional presence while responding directly to emerging community needs.

Importantly, the organisation achieved a positive financial result for the year, returning a surplus of \$96,063 following the previous year's deficit. This reflects careful financial stewardship, disciplined cost management, diversified income streams, and the dedication of an exceptional team.

Throughout the year, Whenua Iti Outdoors continued delivering programmes supporting rangatahi, schools, whānau, and communities, while expanding environmental, cultural, and leadership initiatives and strengthening partnerships with iwi and community organisations across Aotearoa New Zealand.

OVER  
**\$200K**

REINVESTED  
from ExpedNZ programmes

**14**  
GRANT FUNDS  
RECEIVED



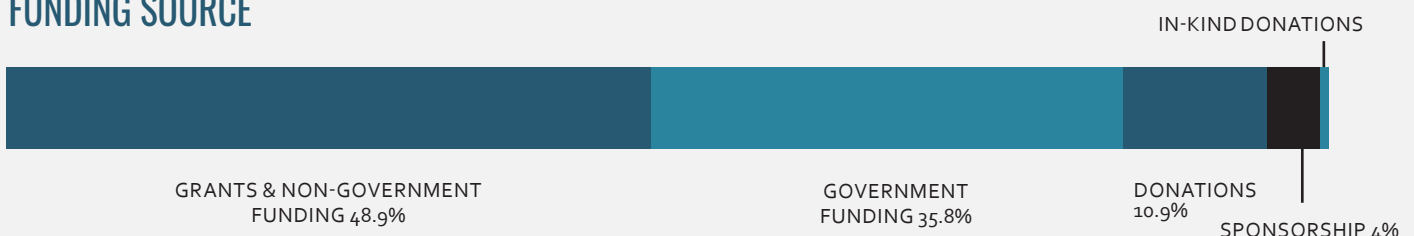
**725**  
STUDENT  
FEEDBACK REPORTS

generated by office & field staff

**86%**

OF PLACES ON  
PROGRAMMES  
fully or partially subsidised

## FUNDING SOURCE



# FINANCIAL SUMMARY

STATEMENT OF FINANCIAL PERFORMANCE	2025	2024
Donations, koha, bequests & other general fundraising	99,393	59,971
General grants	308,354	372,976
Capital grants and donations	267,684	-
Government service delivery grants/contracts	881,488	437,655
Non-government service delivery grants/contracts	895,597	987,078
Revenue from commercial activities	1,222,971	1,102,978
Interest, dividends and other investment income	964	4,469
Other revenue	8,183	25,795
<b>Total Revenue</b>	<b>3,684,633</b>	<b>2,990,923</b>
Employee remuneration & other related expenses	2,631,713	2,248,070
Expenses relating to commercial activities	596,566	562,813
Other expenses related to service delivery	179,328	191,860
Grants and donations made	1,565	1,253
Other expenses	179,398	130,705
<b>Total Expenses</b>	<b>3,588,570</b>	<b>3,254,684</b>
<b>Surplus / (Deficit) for the Year</b>	<b>96,063</b>	<b>(263,761)</b>

STATEMENT OF FINANCIAL POSITION	2025	2024
Current assets	293,679	458,949
Non-current assets	1,073,770	939,932
Total current liabilities	699,388	802,001
Total non-current liabilities	6,349	31,231
<b>Total Assets less Total Liabilities (Net Assets)</b>	<b>661,712</b>	<b>565,649</b>
Accumulated surpluses (or deficits)	535,082	565,649
Revaluation reserves	126,630	-
<b>Total Accumulated Funds</b>	<b>661,712</b>	<b>565,649</b>

## LOOKING FORWARD

Whenua Iti Outdoors remains optimistic about the future despite ongoing uncertainty across the education and funding landscape. The organisation enters 2026 with a stronger strategic focus, growing international demand, and an increasingly diversified income base that provides greater long-term resilience. Significant momentum has continued to build through successful engagement within North America, with strong demand emerging for Experiential Education New Zealand programming alongside growing opportunities within the US philanthropic and international partnership space. This has created a substantial pipeline of future opportunity. While there will continue to be short-term challenges, Whenua Iti remains confident in the strength of its kaupapa, the capability of its team, the long-term value of experiential education, connection to taiao, and opportunities for growth and belonging for young people in communities across Aotearoa New Zealand.

## NGĀ MIHI NUI TO OUR FUNDERS & SUPPORTERS



Sarau Community Trust

## NGĀ MIHI MAIOHA TO OUR DEDICATED STAFF



# CLIMBING CENTRE OPENS

## AN ALL-WEATHER FACILITY PROVIDING QUALITY CLIMBING EXPERIENCES

A key milestone project across the 2025 financial year was the development of a new purpose-built climbing centre designed to expand access to adventure learning for thousands of young people across the region and beyond.

For many participants attending school camps and youth programmes, this facility will provide their first opportunity to experience rock climbing. By removing barriers to accessing climbing, the new centre allows young people from a wide range of backgrounds to try an activity they may otherwise never encounter. Whenua Iti hopes these first experiences will spark a lasting interest in climbing, outdoor recreation and the confidence to embrace new challenges.

Mark Bruce-Miller, CEO, is thrilled with the addition to the Whenua Iti site. “The all-weather centre ensures climbing can be offered consistently alongside kayaking, tramping, environmental learning and leadership development and provides an all-weather alternative to ensure learning can continue regardless of conditions.”

The facility features multiple climbing walls approximately nine metres high, modern holds, adaptable routes for varying abilities, and multiple anchors allowing several climbers to participate at once. It is believed to be one of the largest open-air climbing facilities of its kind in New Zealand.

“It’s wonderful to see Whenua Iti’s success with this project, and the fantastic interest in climbing their new wall is sparking. Nothing could be more satisfying for Tūpiki Trust,” notes Ross Cullen, Tūpiki Trust Chair. Stage one of the project was made possible through the generous support of Tūpiki Trust, Tasman District Council, New Zealand Lottery Grants Board, the Whenua Iti Outdoors Trust and private donors, with further development planned.





375 Main Road Lower Moutere  
RD 2  
Upper Moutere 7175  
Phone: (03)526 7842



Legal Name: Whenua Iti Trust Incorporated  
Trading Name: Whenua Iti Outdoors  
NZBN Number: 9429042902799

Email: [info@whenuaiti.org.nz](mailto:info@whenuaiti.org.nz)  
Website: <http://www.whenuaiti.org.nz>  
Facebook: <http://www.facebook.com/WhenuaitiOutdoors>  
Instagram: @whenuaitioutdoors

*Experiential learning inspiring positive change*